

# Spindle Nose Data Sheet

FOR ZX™ APPLICATIONS



**COGSDILL TOOL**

products, inc.

CUSTOMER \_\_\_\_\_ DATE \_\_\_\_\_

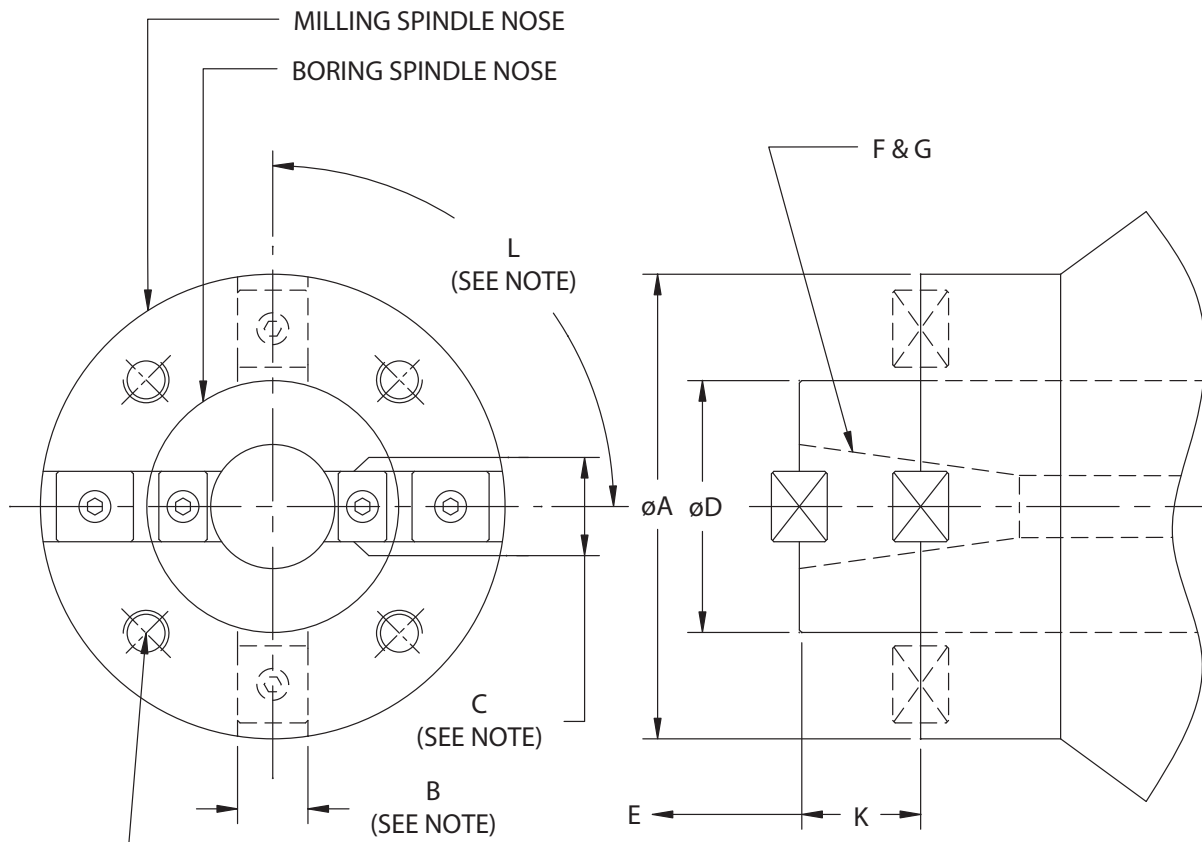
ADDRESS \_\_\_\_\_

CITY \_\_\_\_\_ STATE \_\_\_\_\_ ZIP \_\_\_\_\_

CONTACT \_\_\_\_\_ PHONE \_\_\_\_\_

FAX \_\_\_\_\_ E-MAIL ADDRESS \_\_\_\_\_

MACHINE TYPE \_\_\_\_\_ MODEL # \_\_\_\_\_



**NOTE:** In cases where the milling spindle and boring spindle drive keys are not in line as illustrated, dimension "L" is the angle orientation from the horizontal centerline to the centerline of the boring spindle key.

DIM.	DESCRIPTION	SIZE	DIM.	DESCRIPTION	SIZE
A	MILLING SPINDLE DIAMETER		G	SHANK PULL STUD THREAD	
B	BORING SPINDLE DRIVE KEY		H	HOLE THREAD & DEPTH	
C	MILLING SPINDLE DRIVE KEY		J	BASE CIRCLE DIAMETER (PCD)	
D	BORING SPINDLE DIAMETER		K	SPINDLE HOME POSITION*	
E	MAXIMUM SPINDLE TRAVEL		L	(IF IN LINE THEN ZERO)	
F	SHANK SIZE (ISO/ANSI STD)				

\*NOTE: State "Zero" if spindle faces are flush.